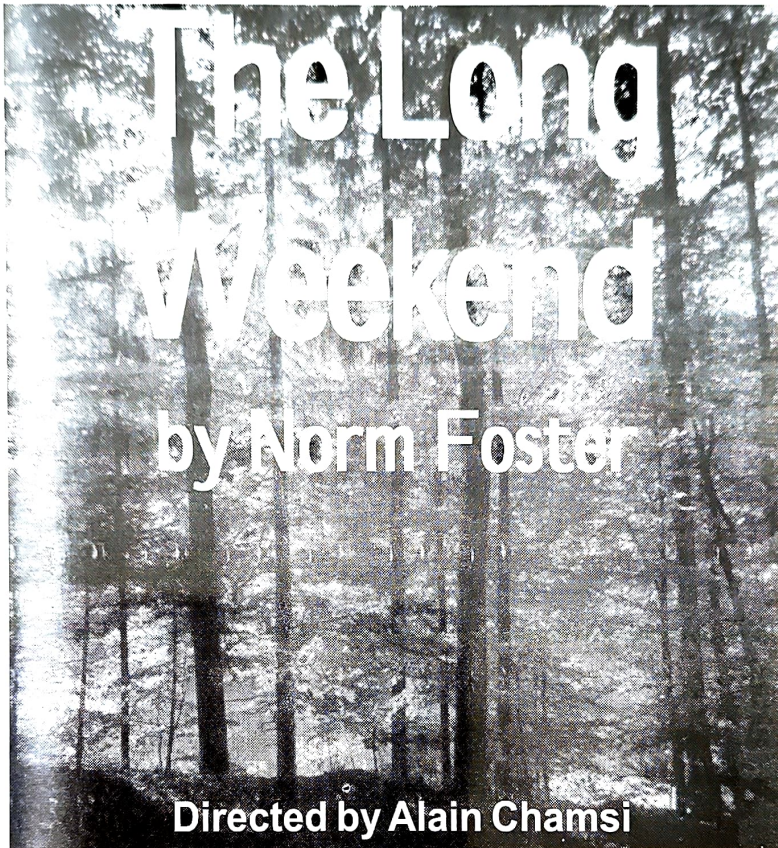




kanata theatre

presents



CAST

MAX TRUEEMAN
WYNN TRUEEMAN
ABBY NASH
ROGER NASH

John Collins
Jennifer Miller
Melissa McCallum
Dale MacEachern

Setting: The weekend retreat of Max and Wynn Trueman.

Time: Act One 2005; Act Two 2007

The Long Weekend by Norm Foster is produced by special arrangement with Playwrights Canada Press.

There will be one intermission. Coffee, soft drinks and desserts will be available. Please be considerate: ensure that pagers and cellular phones are turned off. The use of cameras or tape recorders during the performance is not permitted.

PRODUCTION STAFF

PRODUCTION MANAGERS	Amy Leroux, Dwayne Aylward
STAGE MANAGER	Gwendy Tolley
ASSISTANT STAGE MANAGERS	Lisa Murray, Steven Truelove
SET DESIGN	Josée Aupry
assisted by	Adell Hay
CONSTRUCTION	Bill Williams
assisted by	Barry Caiger, Tony Francis Peter Jefferson
SET PAINTING	Josée Aupry, Michèle Baddoo, Paul Behncke Sean Behncke, Vanessa Behncke, Andrea Fajrajsl Clare Flockton, Amy Leroux, Melissa McCallum Bill Williams, Sandra Wynne, Allan Zander
SET DECOR	Sandra Wynne
COSTUME COORDINATOR	Kate McFarland
assisted by	Tania Carrière
SOUND DESIGN	Rob Fairbairn
assisted by	Steve Duncan, Allan Zander
LIGHTING DESIGN	Karl Wagner
assisted by	Sofia Alvarez, Paul Gardner Jonny Geisler, Chris Story, Bill Williams
PROPERTIES	Ursula Geisler
assisted by	Birgit Geisler, Alex Truelove
FURNISHINGS	Clare Flockton, Sandra Wynne
CONTINUITY	Tania Carrière, Andrea Fajrajsl Ann Williams
MAKE-UP	Tania Carrière
assisted by	Hannah Byrtus, Madelyn Byrtus Lisa Cumming, Martha Johnstone, Katie Ryerson
GREEN ROOM	Nancy Cormier, Birgit Geisler
PUBLICITY	Dorothy Beak
PROGRAM	Wendy Wagner
BOX OFFICE	Sandra Quirt
REFRESHMENTS	Jane Maslin, Adèle Vickers
HOUSE MANAGER	Susan Monaghan

Latecomers will be seated at the discretion of the House Manager.

Kanata Theatre acknowledges with special appreciation the following friends who have provided items or services to the production:

Alan Dean Photography
Ron Evans

DIRECTOR'S NOTE

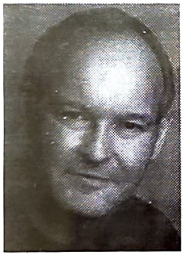
I'm sure most of you have had the pleasure to enjoy one or more Norm Foster plays in the past. I've been lucky to act in a number of them, but also extremely lucky to have worked with directors that have seen beyond the laughs and given the actors a chance to dig a bit deeper into those characters and find the humanity in each one, what drives them and makes them tick. *The Long Weekend* delivers on both fronts and this wonderfully talented cast pulls it off brilliantly. So, please sit back and enjoy yourselves...and please laugh out loud!

BIOGRAPHIES

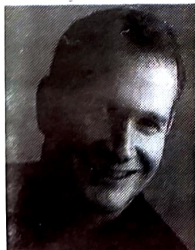
ALAIN CHAMSI (Director) makes his Kanata Theatre directing debut with *The Long Weekend*. He has performed in a number of KT productions such as *Rumors*, *The Snow Ball*, *The Uninvited*, and last year's *Here on the Flight Path*. Alain has also appeared on stage with The Lakeside Players in *The Melville Boys* and *Drinking Alone*, as well as directing *Nurse Jane Goes to Hawaii* and *The Big Leap*, in which he also had a small part.



JOHN COLLINS (Max Trueman) first appeared on Kanata Theatre's stage in *Sylvia* (2000), then again in *Blithe Spirit* (2007). John has also acted in and directed several productions at OLT (garnering two awards in 2006) and Tara Players, and has performed with Orpheus and others in Ottawa. His film and television experience includes several independent films, some commercials, a few tv shows, and lots of voiceover gigs. When not acting or directing, John writes and produces music with recording artist Lucie Dubue.



DALE MACEACHERN (Roger Nash) is pleased to be making his first appearance with Kanata Theatre. He has performed in productions by the Mokami Players of Labrador, including the role of King Philip of France in their award-winning rendition of *The Lion in Winter*. He has also acted with GOYA of Ottawa. He is a great fan of Norm Foster, has a background in sketch comedy and, to the chagrin of his neighbours, has recently taken up the bagpipes.



MELISSA MCCALLUM (Abby Nash) is pleased to be returning to the Kanata Theatre stage. Patrons may remember her from shows such as *Rumors* and *You'll Get Used to It! - The War Show*. Melissa also likes to help back stage whenever she can. She can be found assisting with make up, set dressings and various front of house duties. This season Melissa is thrilled to share the stage with three highly gifted and talented actors and thankful for the support from a tremendous back stage crew.



JENNIFER MILLER (Wynn Trueman) is delighted to make her Kanata Theatre debut in *The Long Weekend*. In Ottawa, she last appeared onstage as Fran in *The Big Leap* (Lakeside Players). In Saskatoon, her favourite roles included Agnes in *Sisters*, Olive in *The Odd Couple* (female version), and Mrs. Smith in *The Bald Prima Donna*. Her TV credits include a brief glimpse of the side of her head in a commercial for the Saskatchewan Wheat Pool. Enjoy the show!



KANATA THEATRE BOARD OF DIRECTORS

PRESIDENT	Robert Fairbairn
VICE PRESIDENT	Jenefer Haynes
SECRETARY	Chrissy Hollands
TREASURER	Karl Wagner
DIRECTOR, BOX OFFICE	Sandra Quirt
DIRECTOR, PUBLICITY	Dorothy Beak
DIRECTOR, OPERATIONS	Jim Holmes
DIRECTOR, PLAY READING	Dewi Williams
DIRECTOR, MEMBERSHIP & TRAINING	Katie Betts
STUDENT MEMBER-AT-LARGE	Katie Ryerson
PAST PRESIDENT	Mary Holmes

HEARING ASSISTANCE FOR OUR PATRONS

Kanata Theatre is proud to announce the availability of the *PhonicEar OnWave* hearing assistance system. Small clip-on receivers permit control over listening volume levels.

These units are available from the cloak room with regular headsets (or you may use your own headset with 3.5mm jack, if you prefer) or T-Switch hearing aid loops.