

# WORKSHOP PRODUCTION ÷ TWO ONE-ACT PLAYS

A PHOENIX TOO FREQUENT

÷ DIRECTOR PETER JEFFERSON

OVERLAID

÷ DIRECTOR EUFRON WILLIAMS

60 brave first snowfall to attend workshop

DECEMBER 1ST 1972.

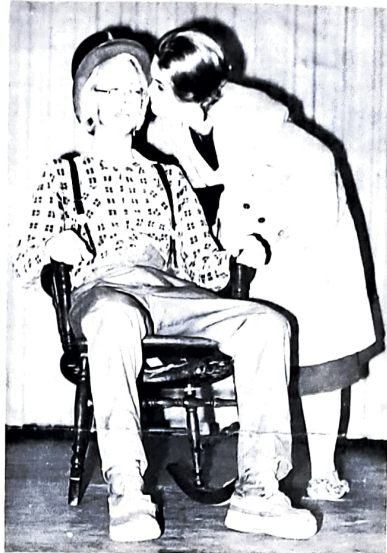
The News  
(Dec. 6/72)

About 60 people attended the Kanata Theatre Group's first set of workshops Friday at Stephen Leacock public school in Kanata. Admission was free and those who attended braved the first heavy snowfall of the season. The first one-act play, "A Phoenix Too Frequent" by Christopher Fry was directed by Peter Jefferson and Gwen Knight. The scene took place in a tomb near Ephesus, at night. Appearing in the play were Mary Anthony, Mary Mauger and Peter Jefferson.

The second play, "Overlaid" by Robertson Davies, was directed by Eufron Williams. John Gilliland, Marg Allen and Liane Freedman were the cast. The scene was a farmhouse kitchen.

The audience appeared to enjoy the productions and appreciated the value and purpose of workshops.

The second readings for "The Remarkable Mr. Pennyfather" by Liam O'Brien, will be held tonight at Earl of March high school. The time is 7:30 pm. This is a delightful comedy, with a large cast directed by Ron Maslin.



Marg Allen and John Gilliland were two of six actors featured at the Kanata Theatre Group's Workshop Friday night. They presented two one-act plays.



Marg Allen 'Ethel' John Gilliland 'Pop'



Marg Allen 'Ethel' Liane Freedman 'Mrs. Bailey' John Gilliland 'Pop'

## 'A PHOENIX TOO FREQUENT'

Mary Mauger 'Doto'  
Marg Anthony 'Dynamene'  
Peter Jefferson 'Tergeus-Chromis'



"A PHOENIX TOO FREQUENT"  
A Comedy in one act by Christopher Fry

Directed by Peter Jefferson and Gwen Knight

Produced by special arrangement with Dramatist Play Service Inc.

### THE CAST

Dynamene ..... Mary Anthony  
Doto ..... Mary Mauger  
Tergeus-Chromis ..... Peter Jefferson

Scene: The Tomb of Virilius, near Ephesus; at night.

### "OVERLAID"

by Robertson Davies

Directed by Eufron Williams

Produced by special arrangement with Samuel French (Canada) Ltd.

### THE CAST

Pop ..... John Gilliland  
Ethel, his daughter ..... Marg Allen  
Mrs Bailey ..... Liane Freedman

Scene: A Farmhouse kitchen.

### PRODUCTION STAFF

Producer ..... Dewi Williams  
Stage Manager ..... Kathi Langille  
Properties and Set ..... Ann Holland, Geoff Holland, Carolyn Westlake, Jean Jones, Patricia Clarke, Pat Walker  
Wardrobe ..... Ann Rombeck  
Make-up ..... Pat Moore, Rosemarie Lawless, Annmarie Copple  
Lighting ..... Dan Pearson, Harm Rembeck, Kathy McMillen, Judy Armstrong  
Sound ..... Rosemary Scott, Judy Armstrong  
Program ..... Annmarie Copple, Rosemarie Lawless  
Technical Assistants ..... Janet Balkwill, Nancy Babson

December 1st 1972.